

Data Sheet

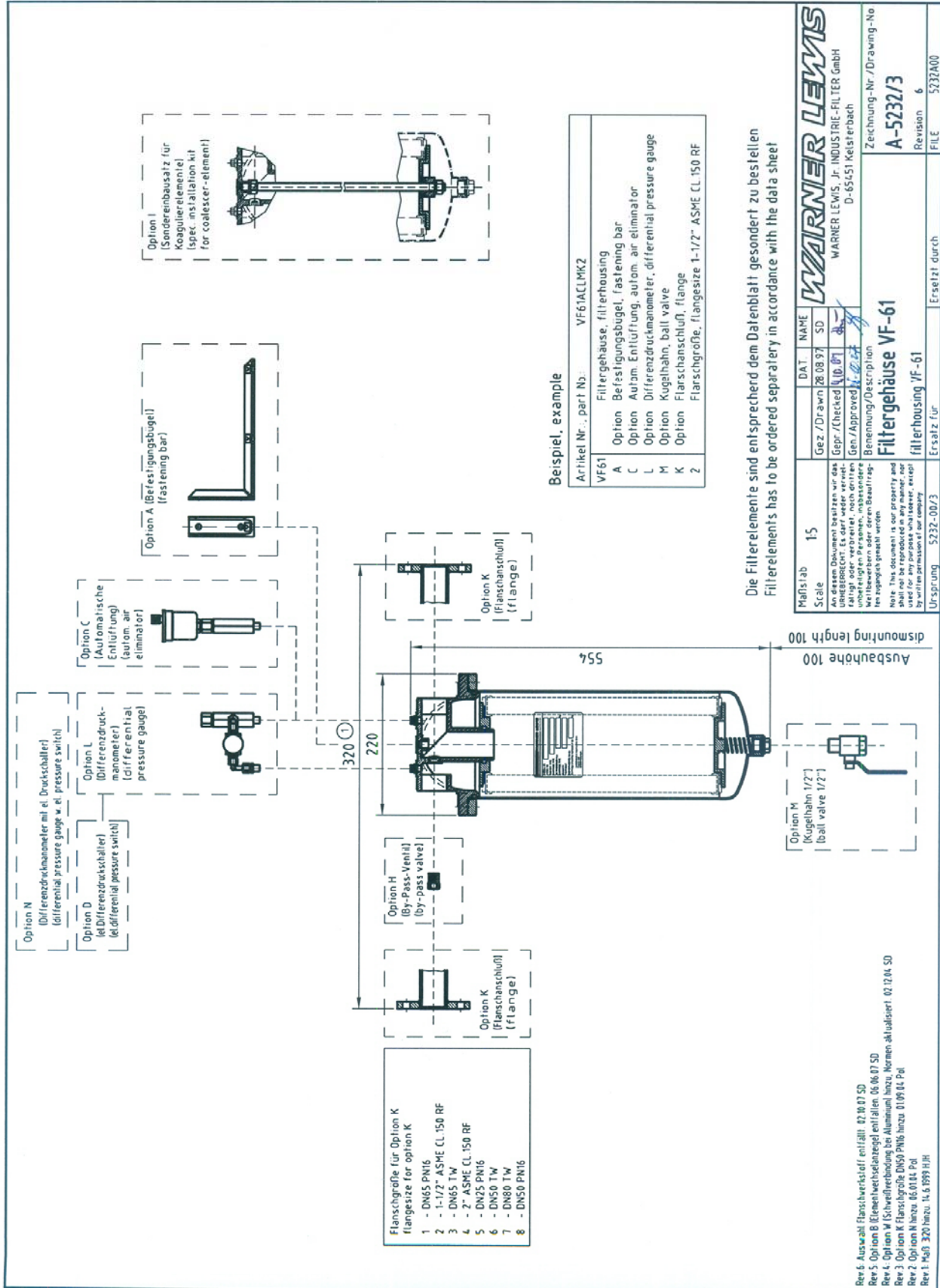
Filter housing VF-61

Main dimensions :		see drawing A-5232/3 Rev.6
Weight (empty, without element) :		appr. 7 kg
Volume :		9 Liter
Material :	Housing Head Housing gasket	Stainless steel Aluminium O-Ring-NBR70
Allow. operating pressure :		10 bar
Test pressure :		14,3 bar
Allow. operating temperature :		-10/+50 °C
Connections :	Inlet/Outlet Drain Vent and gauge	G 1 1/4 G 1/2 G 1/8
VELCON – Elements :	Pleated Paper Element from 1/2 up to 75 µm ratings	FO-614PLF
VELCON water absorbent Aquacon-Elements :	Jet Fuel acc. API/IP 1583 Spezifikation Avgas sim. API/IP 1583 Spezifikation Gasoline/Petrol Diesel and Hydraulic Oil	ACO-61401L ACO-61401L AC-61405 AD-61425
VELCON Coalescer Elements :		on request

Performance of elements depends on the viscosity of media. Max. flow rate for FO- and AC-Elements approx. 200 l/min. For ACO-Elements 219 l/min.

Accessories :	Option A Option C Option D Option H Option I Option K Option L Option M Option N	Fastening bar Automatic air eliminator Electrical pressure switch By-pass-valve Installation kit 4“ Inlet/outlet flange Differential pressure gauge Ball valve (drain) Differential pressure gauge with elec. pressure switch
----------------------	--	--

The standard version has a closed by-pass opening (aviation version). If the filter housing is operated according to API/IP 1583 a differential pressure gauge (option L) has to be installed. Additional accessories on enquiry after technical approval.



Beispiel, example

Artikel Nr. / part No.:	VF61ACLWK2
VF61	Filtergehäuse, filterhousing
A	Option Befestigungsbügel, fastening bar
C	Option Autom. Entlüftung, autom. air eliminator
L	Option Differenzdruckmanometer, differential pressure gauge
M	Option Kugelhahn, ball valve
K	Option Flanschschluß, flange
2	Flanschgröße, flangesize 1-1/2" ASME CL 150 RF

Die Filterelemente sind entsprechend dem Datenblatt gesondert zu bestellen
 Filterelements has to be ordered separately in accordance with the data sheet

WARNER LEWIS	
WARNER LEWIS, Jr. INDUSTRIE-FILTER GmbH D-65451 Kelsterbach	
Maßstab 15	Gez./Drawn 28.08.97 SD
Scale	Gepr./Checked 10.07.97
An diesem Dokument besitzen wir das Urheberrecht. Es darf weder vervielfältigt noch verbreitet werden, insbesondere ohne schriftliche Genehmigung der Warner Lewis Filter GmbH.	
Gen./Approved 11.07.97	
Benennung/Description	
Filtergehäuse VF-61	
Filterhousing VF-61	
Zeichnung-Nr./Drawing-No	A-5232/3
Revision	6
Ursprung 5232-00/3	Ersetzt durch 5232A00

Rev 6: Auswahl Flanschschloß erfüllt: 02.10.07 SD
 Rev 5: Option B Elementherstellungstillation 06.06.07 SD
 Rev 4: Option M (Stoßverbindung bei Aluminium) hinzu, Normen aktualisiert: 02.12.04. SO
 Rev 3: Option K Flanschgröße DNS50 PN16 hinzu 01.09.04 Pgl
 Rev 2: Option K hinzu 05.01.04. Pgl
 Rev 1: Maß 320 hinzu 14.6.1999 H.H